



QLCOMMANDER v2.2.7

QLCommander (QLC) is an orthodox file manager (OFM), inspired by the Norton Commander that was widely used in late '80s and during the 1990's on PCs. QLC provides a text-based user interface for managing files on top of_QDOS, on expanded QLs

QLC is easy to use because the user has a constant view of two file manipulation objects at once (panels with file lists). Each panel can be easily configured to show information about a drive or a directory. At the bottom of the screen, QLC displays a list of commands that that are accessible using the function keys. Thus, without the use of the mouse (although mouse functionality is planned to be integrated), the user is able to perform many file manipulation actions quickly and efficiently.

Table of Contents

Table of Contents	2
QL Commander Install	4
Running on QDOS vs SMSQ/E.....	6
Using QLCOMMANDER	7
Warning:.....	7
Extensions used	7
The QLC Screen	8
Commands.....	9
View a file.....	12
View a Font file	12
View a Quill document	12
View a Zip archive	13
View an image document.....	13
View any other document type.....	14
Create a directory.....	14
Copy files	15
Copy a single file	15
Copy a single directory	15
Copy multiple files and/or directories	15
Delete files	16
Rename a file or directory	16
Rename a single file	16
Rename a single directory	17
Move Files.....	17
Move a single file	17
Move a single directory	17
Move multiple files and/or directories	17
Show Info	18
Compare Directories	19
Open a XChange document.....	19
Edit a document	20
Unzip a _zip archive	20
ZIP compress a directory.....	20
ZIP compress the selected files and/or directories.....	21
Calculate directory size	21
Calculate Selected size	21
Set Auto Calculate Selected Size	22
Load _bas file.....	23

Load and Run _bas file	24
Using with FileInfo2.....	25
Show Help.....	25
Show About Box.....	25
Redraw Screen	26
End Program.....	26
What's New	26
What's New in version 2.2.7 – March 21 st , 2025.....	26
What's New in version 2.1	27

QL Commander Install

To install the program follow the steps:

1. Create a directory for QLC
e.g win1_QLCOMMANDER_
2. Create a directory for temporary files, if you do not already have one
e.g. win1_TEMP
3. unzip QLC_zip into QLC directory. You should have the following files:

No	File name	Description
1	5pixels_fnt	5 pixels font, used in Status Bar and Quill view
2	bold8_fnt	Bold 8 pixels font, used in window titlw
3	qlc_fnt	Font used in panels and commands line
4	qlc227_obj	Main program, Turbo compiled without line numbers
5	qlc227_exe	Main program, Turbo compiled with line numbers
6	qlc_cfg	Sample configuration file, can be edited with alconfig_bas
7	qlcmin_code	QLC extensions for Minerva
8	qlcsms_code	QLC extensions for SMSQE
9	qlcconfig_bas	Basic program to configure QLC
10	quill_view	Quill Viewer
11	zip	External ZIP program
12	unzip	External UNZIP program
13	viewzip	External ViewZIP program
14	viewimg	External Image Viewer, compiled without Qlib runtime
15	viewimgtrtm	External Image Viewer, compiled with Qlib runtime
16	qlc_spr	QLC sprite for Launchpad or other programs

4. If you are running Minerva then load Toolkit 2 (not needed for SMSQ/E)
5. Load Turbo Toolkit
6. Load and run the QLC Configurator program : qlcconfig_bas . Edit the settings it to match your desired configuration and save them in the directory where you installed QLC.



Observation:

When started the configuration program shows the default configuration, not your last saved configuration!

Edit the "Save config to" value to match the directory where you installed QLCommander and press F3 to load the current configuration

7. Make sure that you have loaded the necessary general extensions:

For Minerva

- Toolkit 2 (at least v2.88, but v2.32 is recommended)
- Turbo Toolkit
- Ptr_gen
- Qlcmn_code
- any other extensions needed by your selected editor (e.g. QD also needs menu_rext)

For SMSQ/E

- Turbo Toolkit
- Qlcsms_code
- any other extensions needed by your selected editor (e.g. QD also needs menu_rext)

8. If you don't usually load QLib_obj in your boot file then rename viewimagertm to viewimage

9. Run QLC

On Minerva use the command (modify the drive and directory name to those in your setup):
EX win1_QLCOMMANDER_qlc227_obj; win1_QLCOMMANDER_

If no parameter is provided than the default parameter will be use "win1_QLC_"

On SMSQ/E use the command (modify the drive and directory name to those in your setup):
EX win1_QLCOMMANDER_qlc227_obj

There is no need for passing the directory as parameter, QLC will use the HomeDir\$

qlc227_exe – is QLC executable compiled with Turbo and with line numbers included, so in case of a crash it will display the line number

qlc227_obj – is QLC executable compiled with Turbo and without line numbers

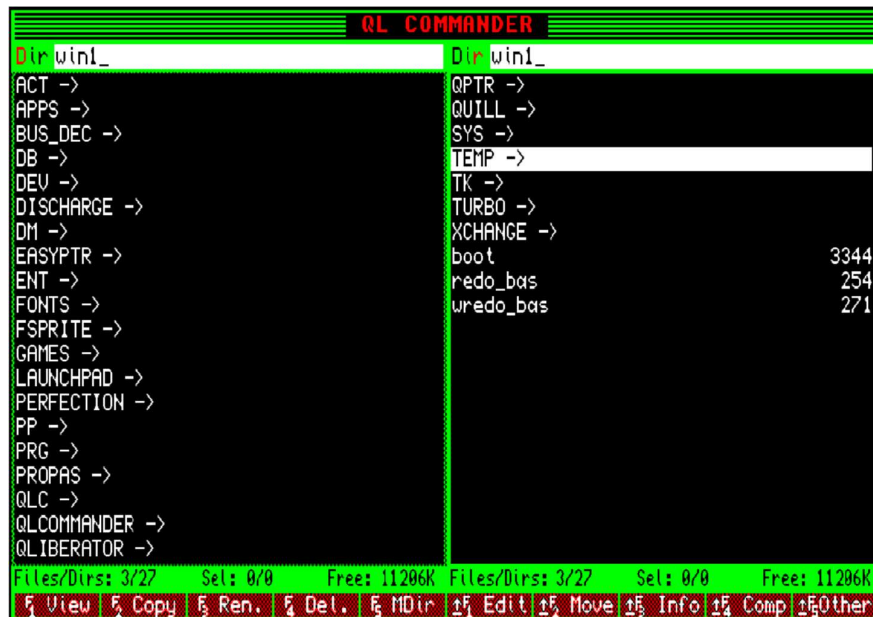
Running on QDOS vs SMSQ/E

QLCommander can run both in QDOS and SMSQE. In QDOS it will run in mode 4. In SMSQ/E it can be configured to run in all modes, including high res and 8 bit colour and 16 bit high colour modes.

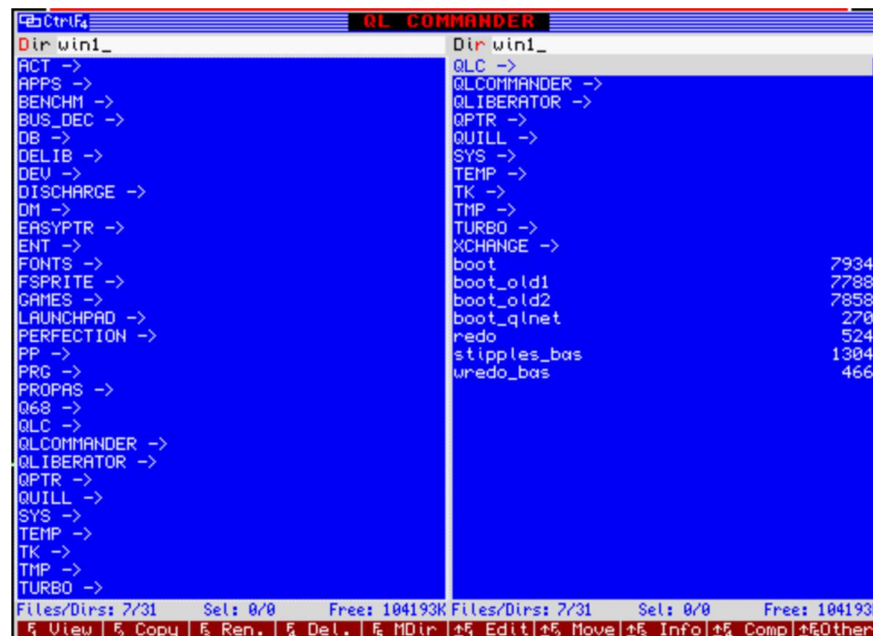
Configuration example for running in 1024x768, 8 bit colour or high colour mode:

Fount : 3 (or 2, for thinner fount – but use double height characters for better visibility on screen)
Chrs per line : 40
No of rows : 30 (30 rows in a panel – we take advantage of the high resolution)
QL colours : 0 (will run with a different color scheme that takes advantage of the available colours)

QL Commander running on QDOS or in SMSQE with QL colors and 512x256 resolution



QL Commander running on SMSQE High Colour mode



Using QLCOMMANDER

Warning:

The SBASIC version of QLCOMMANDER is provided for testing, bug fixing and improvements. To use it you need to have a good knowledge of SuperBasic and Turbo. On an unexpanded QL the loading of directory lists is quite slow. On a QL+GoldCard it is bearable. On QL + SuperGoldCard or faster computer, it runs ok. But still it needs to be compiled.

Extensions used

QLC uses the following extensions :

For Minerva

- Toolkit 2 (at least v2.88, but v2.32 is recommended)
- Turbo Toolkit
- Ptr_gen
- Qlcmin_code

For SMSQ/E

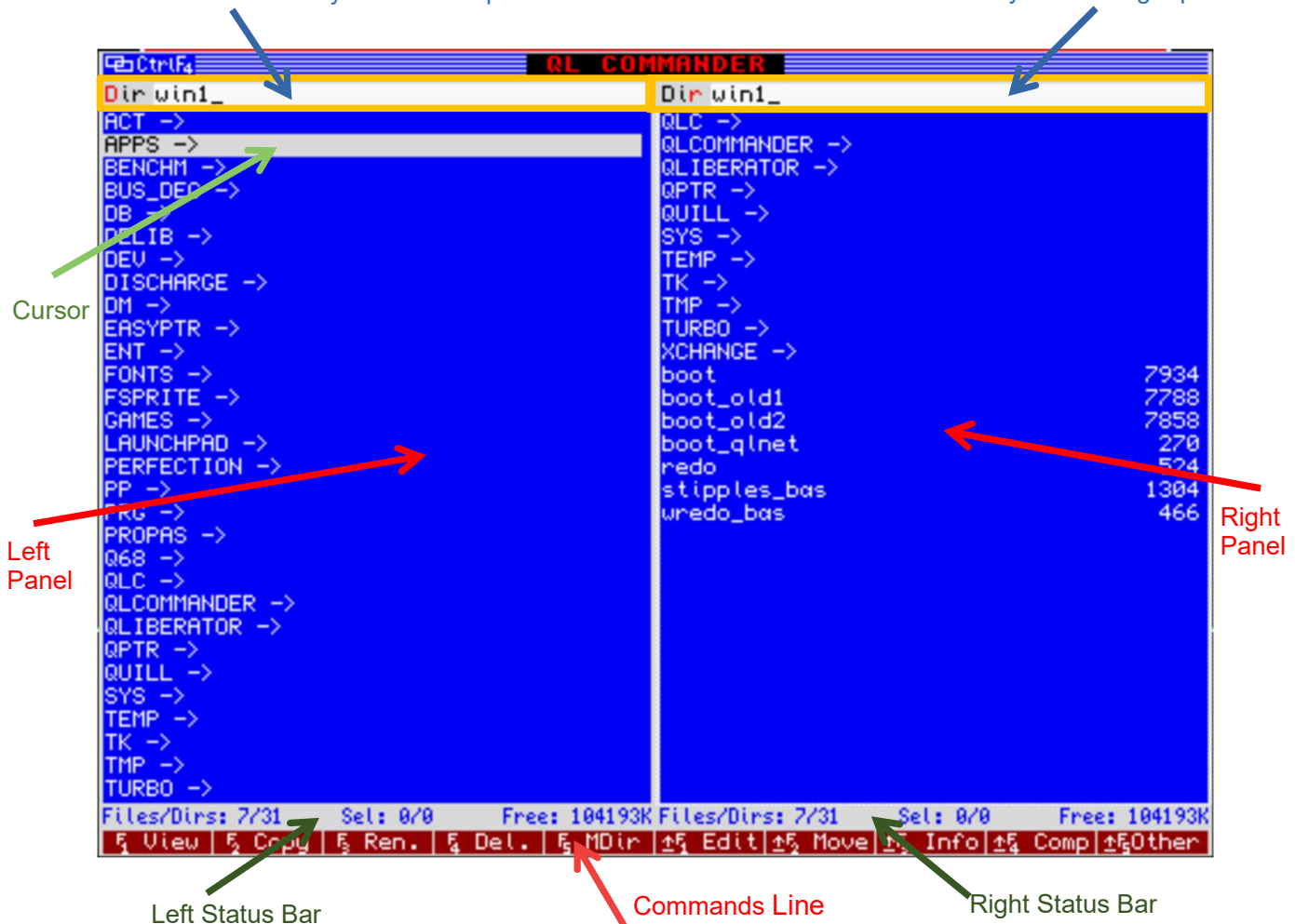
- Turbo Toolkit
- Qlcsms_code

Your selected editor may use other extensions, so make sure all are loaded

The QLC Screen

LeftDir\$
the selected directory listed in left panel

RightDir\$
the selected directory listed in right panel



Left and Right Status Bars shows:

The total number of files and directories that exist in the active left and right path

The total number of selected files and directories that exist in the active left and right panels

The total free space on the drive

If there are selected files and directories AND Auto Calculate Size is ON (see ...) then the total selected size will be shown instead of the total free space on the drive.

Convention: Regardless on how are saved on the QL drive:

- All directories are shown in uppercase
- All directories are marked with ->
- All files are shown in lowercase

Commands

Command	Description												
Ctrl-d	Change the directory listed in the left panel (edit box in place)												
Ctrl-r	Change the directory listed in the right panel (edit box in place)												
Tab	Change active panel												
Up arrow	Move the cursor one item up in the list												
Down arrow	Move the cursor one item down in the list												
Shift-Up arrow	Move the cursor one page up in the list												
Shift-Down arrow	Move the cursor one page down in the list												
Ctrl-Up arrow	Jump to first item in the current panel												
Ctrl-Down arrow	Jump to last item in the current panel												
Ctrl-Left arrow	Open parent directory. If the current directory has no parent (is root of the drive) then it jumps to first item in the panel												
Enter	<p>If cursor is on item <code>.-></code> then go one level up on the directory tree If cursor is on a directory then go one level down on the directory tree, into the selected directory If the cursor is on file with a known extension then it will perform the following action:</p> <table> <tr> <th>Extension</th><th>Action</th></tr> <tr> <td><code>_bas</code></td><td>Load the file in the SBASIC editor, then calls ED editor</td></tr> <tr> <td><code>_cde</code> <code>_code</code> <code>_ext</code></td><td>It will LRESPR the file</td></tr> <tr> <td><code>_doc</code> <code>_aba</code> <code>_grf</code> <code>_dbf</code> <code>_prg</code></td><td>Load the file in XChange</td></tr> <tr> <td><code>_zip</code></td><td>Unzips the file into the directory selected in the opposing panel</td></tr> <tr> <td>Any other extension</td><td>Tests if the file if EXECable, and if it is it execs it</td></tr> </table>	Extension	Action	<code>_bas</code>	Load the file in the SBASIC editor, then calls ED editor	<code>_cde</code> <code>_code</code> <code>_ext</code>	It will LRESPR the file	<code>_doc</code> <code>_aba</code> <code>_grf</code> <code>_dbf</code> <code>_prg</code>	Load the file in XChange	<code>_zip</code>	Unzips the file into the directory selected in the opposing panel	Any other extension	Tests if the file if EXECable, and if it is it execs it
Extension	Action												
<code>_bas</code>	Load the file in the SBASIC editor, then calls ED editor												
<code>_cde</code> <code>_code</code> <code>_ext</code>	It will LRESPR the file												
<code>_doc</code> <code>_aba</code> <code>_grf</code> <code>_dbf</code> <code>_prg</code>	Load the file in XChange												
<code>_zip</code>	Unzips the file into the directory selected in the opposing panel												
Any other extension	Tests if the file if EXECable, and if it is it execs it												
Shift-Enter	If the cursor is on BASIC program (Boot or <code>_bas</code>) then the program is loaded and executed (LRUN)												
Space	Select the item under the cursor for further operations. If the item is selected it will deselect it. Selected items are printed in red												
+ or =	Selects all files and directories from the current panel												
- or _	Deselects all files and directories from the current panel												
\	Invert selection. Deselects all selected files and directories and selects all unselected from the current panel												
Ctrl-a	Show About box												
Ctrl-h	Show the Help page												

Command	Description												
Ctrl-f	Calls FileInfo2, if it was configured. This is the default command, but can be changed by user, in QLConfig_bas program												
a.. z a umlaut..oe diphthong	Move cursor to first file that starts with the letter. If none found then move to first file that starts with a letter greater than that												
A.. Z A umlaut..OE diphthong	Move cursor to first directory that starts with the letter. If none found then move to first file that starts with a letter greater than that												
0..9	Move cursor to next file or directory that starts with that number												
Ctrl-F4	Move the program window on screen. This command is only available in SMSQ/E												
F1	View the file under the cursor <table border="1"> <thead> <tr> <th>Extension</th><th>Action</th></tr> </thead> <tbody> <tr> <td>_fnt _fat</td><td>View as font. Regardless of the extension fnt or fat the program will test if the font is a regular font or a fat font and will try to render it accordingly</td></tr> <tr> <td>_doc</td><td>View Quill document. QICommander will check that the file has a valid Quill header. Note: there are no checks performed to test the integrity of the file, so if the document is corrupted a crash might occur.</td></tr> <tr> <td>_scr _scr4 _scr8</td><td>View as image. If the file is larger than 32k then only the first 32k will be loaded on screen. _scr and _scr4 are presented in mode 4 _scr8 are presented in mode 8 User can change mode by pressing 4 or 8, after the image is loaded _scr and _scr4 files are presented in mode 4</td></tr> <tr> <td>_zip</td><td>View as zip archive. It will list the content of the archive. QICommander will check that the file has a valid Zip header. Note: there are no checks performed to test the integrity of the file, so if the archive is corrupted or is a zip archive created on a different operating system and does not conforms to QDOS requirements a crash might occur.</td></tr> <tr> <td>Any other extension</td><td>View as text</td></tr> </tbody> </table>	Extension	Action	_fnt _fat	View as font. Regardless of the extension fnt or fat the program will test if the font is a regular font or a fat font and will try to render it accordingly	_doc	View Quill document. QICommander will check that the file has a valid Quill header. Note: there are no checks performed to test the integrity of the file, so if the document is corrupted a crash might occur.	_scr _scr4 _scr8	View as image. If the file is larger than 32k then only the first 32k will be loaded on screen. _scr and _scr4 are presented in mode 4 _scr8 are presented in mode 8 User can change mode by pressing 4 or 8, after the image is loaded _scr and _scr4 files are presented in mode 4	_zip	View as zip archive. It will list the content of the archive. QICommander will check that the file has a valid Zip header. Note: there are no checks performed to test the integrity of the file, so if the archive is corrupted or is a zip archive created on a different operating system and does not conforms to QDOS requirements a crash might occur.	Any other extension	View as text
Extension	Action												
_fnt _fat	View as font. Regardless of the extension fnt or fat the program will test if the font is a regular font or a fat font and will try to render it accordingly												
_doc	View Quill document. QICommander will check that the file has a valid Quill header. Note: there are no checks performed to test the integrity of the file, so if the document is corrupted a crash might occur.												
_scr _scr4 _scr8	View as image. If the file is larger than 32k then only the first 32k will be loaded on screen. _scr and _scr4 are presented in mode 4 _scr8 are presented in mode 8 User can change mode by pressing 4 or 8, after the image is loaded _scr and _scr4 files are presented in mode 4												
_zip	View as zip archive. It will list the content of the archive. QICommander will check that the file has a valid Zip header. Note: there are no checks performed to test the integrity of the file, so if the archive is corrupted or is a zip archive created on a different operating system and does not conforms to QDOS requirements a crash might occur.												
Any other extension	View as text												
F2	Copy the selected items to the other panel (in the directory currently displayed in the other panel) If there are no selected items then it will copy the item under the cursor												
F3	Rename the file under the cursor. It is not possible to rename directories												
F4	Deletes the selected items If there are no selected items then it will delete the item under the cursor All delete operations require user confirmation												
F5	Create a Directory												
Shift-F1	Loads the file under into the editor (if editor was configured)												

Command	Description						
	<table> <tr> <th>Extension</th><th>Action</th></tr> <tr> <td>_doc _aba _grf _dbf</td><td>Load the file in Xchange Quill, in corresponding program</td></tr> <tr> <td>Any other extension</td><td>Load the file in the configured editor</td></tr> </table> <p>Xchange and/or editor are started as separate tasks. You can go back to QLCommander by pressing CTRL_C</p>	Extension	Action	_doc _aba _grf _dbf	Load the file in Xchange Quill, in corresponding program	Any other extension	Load the file in the configured editor
Extension	Action						
_doc _aba _grf _dbf	Load the file in Xchange Quill, in corresponding program						
Any other extension	Load the file in the configured editor						
Shift-F2	Move the selected items to the other panel (in the directory currently displayed in the other panel) If there are no selected items then it will move the item under the cursor						
Shift-F3	Shows the Info window. Press any key to close the window						
Shift-F4	Compare left panel and right panel files and directories. Files and Directories that are different will be marked and shown in red						
Shift-F5	<p>Show "Other commands" menu: The commands available in this menu are</p> <ol style="list-style-type: none"> 1. Calculate Directory Size 2. Calculate Selected Size 3. Auto Calculate Selected Size: On/Off 4. Zip current directory 5. Zip selected files 6. About Box 7. Help 8. Redraw Screen 9. End Program 						

View a file

All files can be viewed, but some have dedicated viewers:

- Font files (_fnt, and _fat)
- Image files (_scr, _scr4 and .scr8)
- Quill documents (_doc and .doc)
- Text files (all other extensions)
- Zip archives (_zip and .zip)

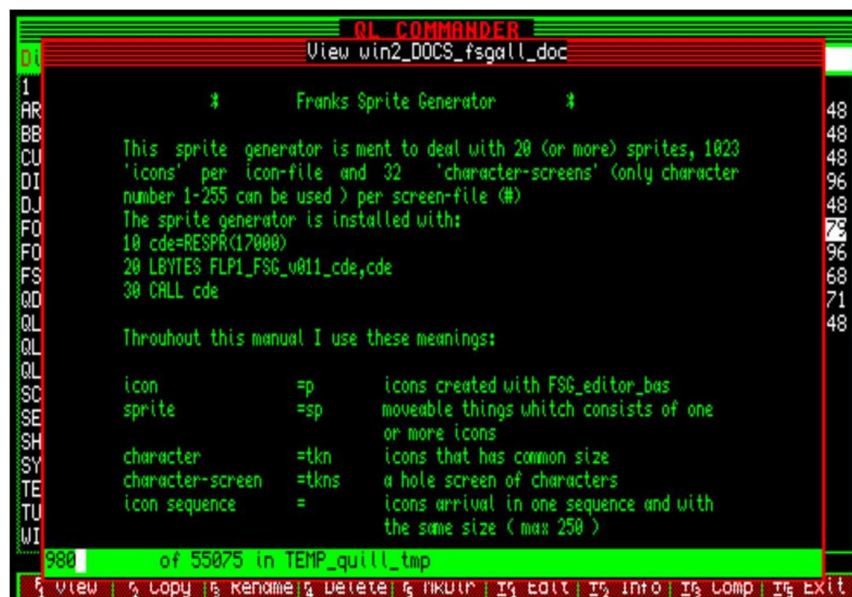
View a Font file

For viewing Font files move cursor over a font file that has _fnt or _fat extension and press F1
Press any key to close the window



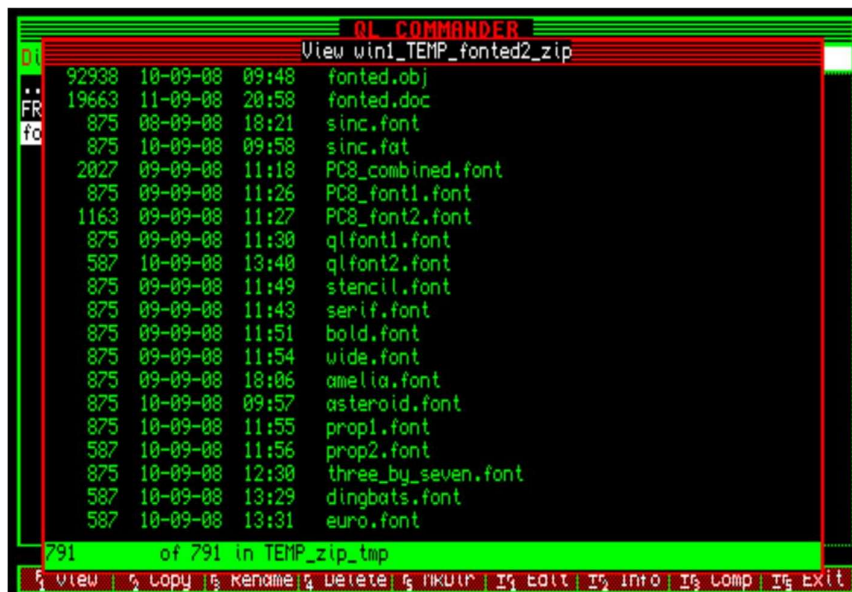
View a Quill document

For viewing a Quill document move cursor over the file and press F1. File must have _doc extension in order to be recognized as a Quill doc, and a valid Quill header. QLC will execute *quill_view* that will create a fair rendition of the document in text mode, in the temporary directory, and then will call *more* extension to view the file. Press ESC to exit the viewer.



View a Zip archive

For viewing a Zip archive move cursor over the file and press F1. File must have `_zip` extension in order to be recognized as a zip document. QLC will execute `viewzip` that will create a temporary file in the temporary directory, and then will call `more` extension to view the file. Press ESC to exit the viewer.



View an image document

This feature is only available on classic QL configuration (resolution 512x256 and classic colors) and on QPC also in 16 and 32 High Colour modes. Only `_scr` images can be viewed.

The image will be loaded on the screen at address 131072

`_scr` and `_scr4` files will be loaded in mode 4.

`_scr8` files will be loaded in mode 8.

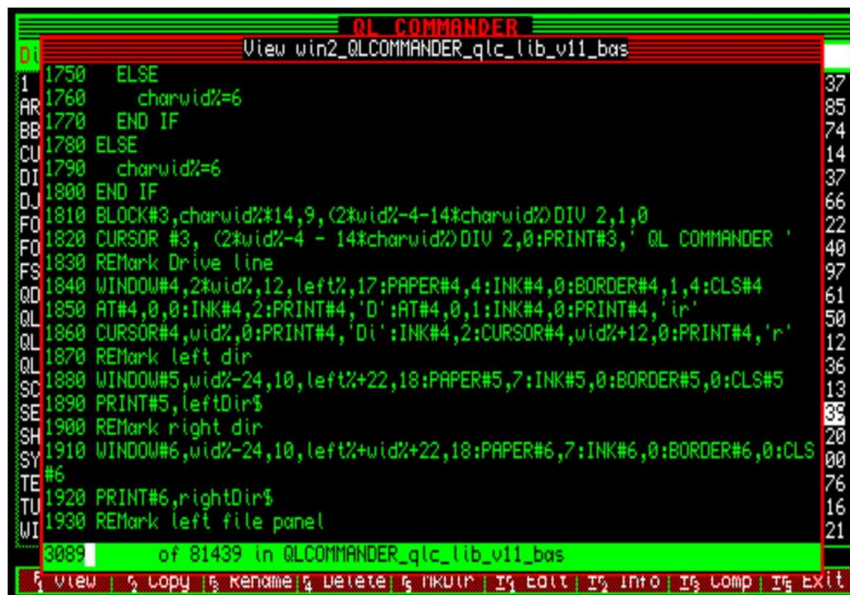
You can press 8 to change to mode 8, or 4 to change to mode 4. Any other key will close the image.



View any other document type

For viewing, as you already guessed, move cursor over the file and press F1. QLC will call *more* extension to view the file. Press ESC to exit the viewer.

If the file is a plain file (a `_bas` file, text file etc.) then it will be readable.



```
QL COMMANDER
View win2_QLCOMMANDER_qlc_lib_v11_bas
1750 ELSE
1760 charuid%=6
1770 END IF
1780 ELSE
1790 charuid%=6
1800 END IF
1810 BLOCK#3,charuid%#14,9,(2*uid%-4-14*charuid%)DIV 2,1,0
1820 CURSOR #3, (2*uid%-4 - 14*charuid%)DIV 2,0:PRINT#3,' QL COMMANDER '
1830 REMark Drive line
1840 WINDOW#4,2*uid%,12,left%,17:PAPER#4,4:INK#4,0:BORDER#4,1,4:CLS#4
1850 AT#4,0,0:INK#4,2:PRINT#4,'D':AT#4,0,1:INK#4,0:PRINT#4,'ir'
1860 CURSOR#4,uid%,0:PRINT#4,'Di':INK#4,2:CURSOR#4,uid%+12,0:PRINT#4,'r'
1870 REMark left dir
1880 WINDOW#5,uid%-24,10,left%+22,18:PAPER#5,7:INK#5,0:BORDER#5,0:CLS#5
1890 PRINT#5,leftDir$
1900 REMark right dir
1910 WINDOW#6,uid%-24,10,left%+uid%+22,18:PAPER#6,7:INK#6,0:BORDER#6,0:CLS#6
1920 PRINT#6,rightDir$
1930 REMark left file panel
9089 of 81439 in QLCOMMANDER_qlc_lib_v11_bas
View Copy Rename Delete Mkdir Edit Info Comp Exit
```

Create a directory

To create a directory just press F5 – the Create Directory window will appear and you will be able to enter the directory name, and then press Enter.

If you leave the edit box empty and press Enter the creation is canceled



Copy files

Copy a single file

Move the cursor over the file and press F2. The file will be copied in the directory currently selected on the other panel.

Copying a single file does not require confirmation from the user

Copy a single directory

Move the cursor over the directory and press F2. The directory will be copied in the directory currently selected on the other panel.

Copying a single directory requires confirmation from the user

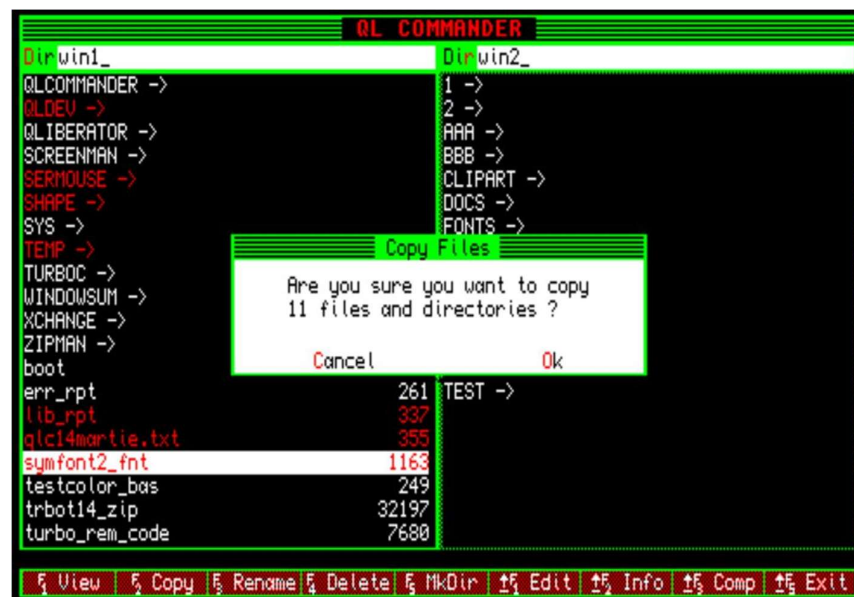
Attention: Copy process will try to copy all subdirectories and files of the directory you are copying! Some subdirectories and/or files might not be copied, if their destination full name exceeds 36 characters (including drive name)

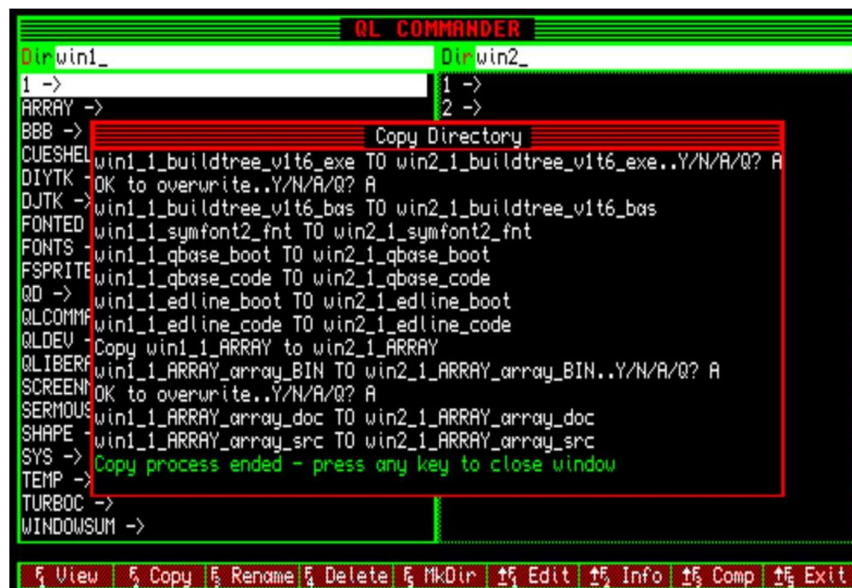
Copy multiple files and/or directories

First select all the files/directories to copy using SPACE key . The selected items will be written with red. Then press F2.

Copying multiple files and/or directories requires confirmation from the user

Attention: Copy process will try to copy all subdirectories and files of the directory you are copying! Some subdirectories and/or files might not be copied, if their destination full name exceeds 36 characters (including drive name)





Delete files

Delete operations are analogous with copy operations, but all delete operations require user confirmation!

Attention: Delete process will parse subdirectories and will delete all subdirectories and files of the directories you are deleting!

Rename a file or directory

In QDOS you can rename a file or an empty directory, but you cannot rename a non-empty directory. Also rename can change the name of a file, but not the drive. So what QLCommander does is this:

RENAME a file

- if target is on the same drive then rename the file
- if target is on a different drive then:
 - copy file to target
 - delete source file

RENAME a directory

- re-creates all directory structure
- renames all files in the directory tree (see above)
- deletes the old directory structure

Rename a single file

Move the cursor over the file and press F3. In the dialogue box enter the new file name. Press Enter to rename or Escape to cancel.

Rename a single directory

Move the cursor over the directory and press F3. In the dialogue box enter the new directory name. Press Enter to rename or Escape to cancel.

Move Files

MOVE

1. if move on the same drive: it perform a RENAME (as above)
2. if move on a different drive then
 - re-creates all directory structure on new drive and path
 - copies all files in the tree
 - deletes the old directory structure including the files

Renaming directories in this way will have the benefit of having cleaned directories as all file entries will be stored in a continuous order. So, all holes (unused entries) in the old directories being squeezed, the new directories will probably be smaller than originals with faster access.

Move a single file

Move the cursor over the file and press Shift-F2. The file will be moved in the directory currently selected on the other panel.
Moving a single file does not require user confirmation.

Move a single directory

Move the cursor over the directory and press Shift-F2. The directory will be moved in the directory currently selected in the other panel.
Moving a single directory does not require user confirmation.

Move multiple files and/or directories

First select all the files/directories to move using SPACE key . The selected items will be shown in red. Then press Shift-F2.
Moving multiple files and/or directories requires user confirmation.

Show Info

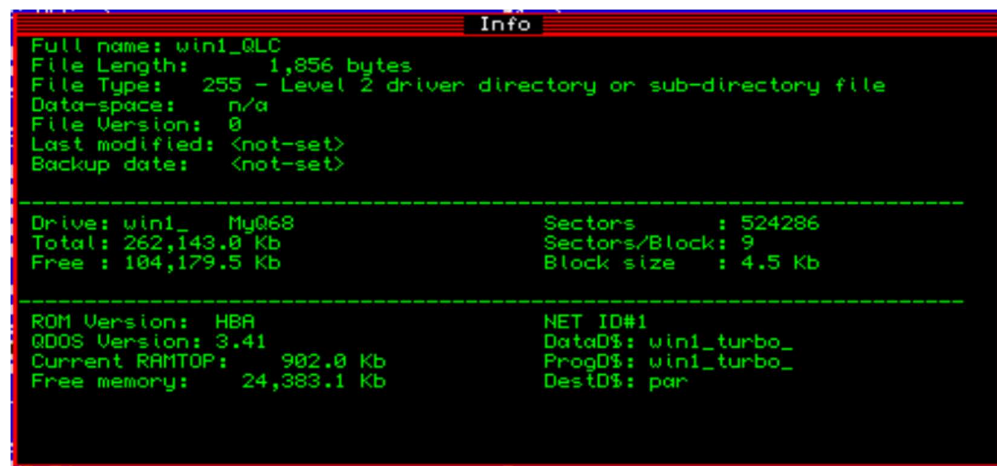
Move the cursor over the file or directory and press Shift-F3. The Info window will be displayed.
There are 3 sections in the window:

Section 1: Information about the file or directory

Section 2: Information about the drive

Section 3: information about the system

Press any key to close the window



Compare Directories

Press Shift-F4 to compare the directory displayed in the left panel to the directory displayed in the right panel. All different directories and/or files will be marked and displayed in red

A directory is considered to be “the same” if it has the same name. Name comparison is case-insensitive, and the contents of the directory are not checked, so they might be different

A file is considered to be “the same” if:

- it has the same name (name comparison is case-insensitive)
- it has the same size

File contents are not checked, so they might be different



Open a XChange document

You can open a Xchange document only if you configured QLCommander to use it (you have set the correct path to Xchange and the correct executable name – this generally is Xchange)

The following extensions are associated with Xchange documents:

- _doc – Quill document
- _aba – Abacus document
- _grf – Easel documentation
- _dbf – Archive document (database)
- _prg - Archive document (program)

Move the cursor over the file and press Enter. The file will be loaded into Xchange and the correct program will start.

You can use CTRL-C to switch back to QLCOMMANDER or to other task.

After closing Xchange press CTRL-C to return to QLCommander

Edit a document

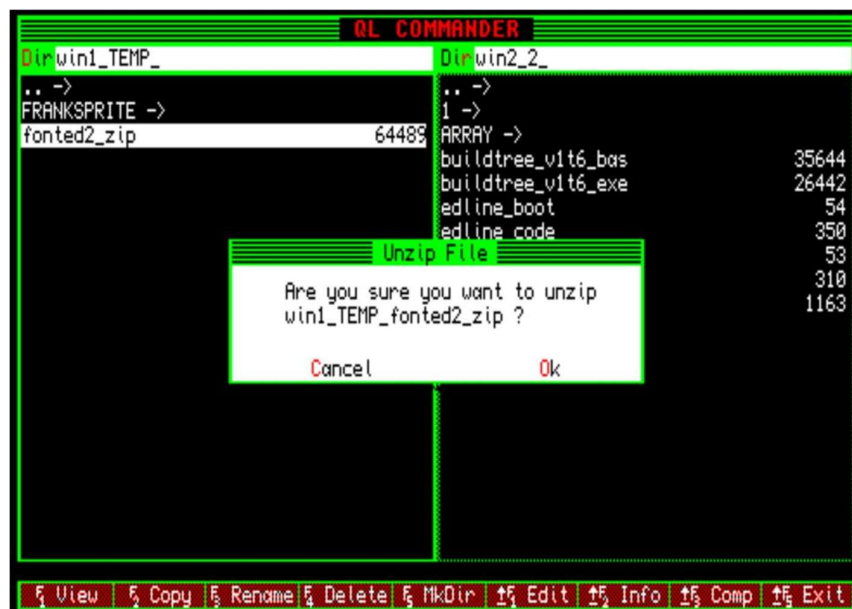
You can open a document in the editor only if you configured QLCommander to use an editor - you have set the correct path to editor and the correct executable name when you configured QLCommander in QLCconfig_bas

Some editors require extensions in order to run – those extensions must be loaded on your system, preferably in your boot filename

Move the cursor over the file and press Enter. The file will be loaded into your selected editor. You can use CTRL-C to switch back to QLCOMMANDER or to other task. After closing the editor press CTRL-C to return to QLCommander

Unzip a _zip archive

Move the cursor over the _zip file and press Enter. QLCommander will execute UNZIP and the archive will be unzipped into the directory selected in the opposite panel.



QLCommander uses Unzip program that is located in the program's directory.

QLCommander doesn't check the integrity of the zip archive so in case of any errors, if unzip crashes, then QLCommander might also crash.

ZIP compress a directory

You can ZIP compress the current active directory, that is displayed in the panel and has a cursor. Select Shift-F5. The Other commands menu will be displayed. Select 4. Zip current directory. QLCommander will execute ZIP and the archive will be created into the directory selected in the opposite panel. The archive name will be current directory's name + "_zip"

QLCommander uses special Zip program that is located in the program's directory.

ZIP compress the selected files and/or directories

First select all the files/directories you wish to compress using SPACE key . The selected items will be written with red.

Press Shift-F5. The Other commands menu will be displayed. Select 5. Zip selected files.

QLCommander will execute ZIP and the archive will be created into the directory selected in the opposite panel. The archive name will be current directory's name + "_zip"

QLCommander uses special Zip program that is located in the program's directory.

Calculate directory size

Press Shift-F5. The Other commands menu will be displayed. Select 1. Calculate Directory Size

- If the cursor is on a directory than the command will calculate the size of the directory under the cursor
- If the cursor is on a file than the command will calculate the size of the directory currently displayed in the active panel.

A new window will appear with the following data:

- Directory size (including file headers)
- Actual size occupied on drive
- Total number of files in the directory tree
- Total number of directories in the directory tree

Press Escape to close the window



Calculate Selected size

First select with SPACE key all the files/directories for which you wish to calculate size. The selected items will be written with red.

Press Shift-F5. The Other commands menu will be displayed. Select 2. Calculate Selected Size

A new window will appear with the following data:

- Number of selected files and directories

- Total size (including file headers)
- Actual size occupied on drive
- Total number of files in the selected directory tree
- Total number of directories in the selected directory tree

Press Escape to close the window

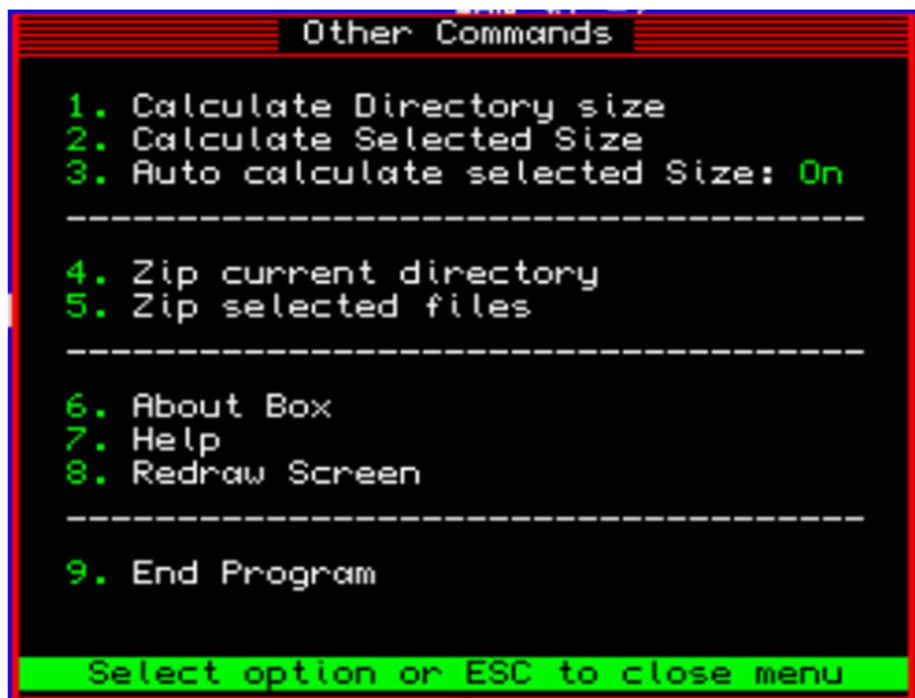


Set Auto Calculate Selected Size

Press Shift-F5. The Other commands menu will be displayed. Select 3. Auto Calculate Selected Size

The value of Auto Calculate Selected size will change state On-Off

The Other Commands window will close automatically



If Auto Calculate Selected Size is **OFF** then the Left and Right Status Bars will show the following data:

- The total number of files and directories that exist in the active left and right path
- The total number of selected files and directories that exist in the active left and right panels
- The total free space on the drive

If Auto Calculate Selected Size is **ON** then the Left and Right Status Bars will show the following data:

- The total number of files and directories that exist in the active left and right path
- The total number of selected files and directories that exist in the active left and right panels
- The total free space on the drive (if there are no selected files or dirs.)
- The total size of the selected items (if there are selected files or dirs.)



Attention:

If Auto Calculate Selected Size is **ON** then each item select/deselect will recalculate the Selected size.

While the calculation is in progress the text “**Size: Wait...**” is displayed in the Status Bar

Autocalculation can be time consuming on a slow QL, so it is best to set it to OFF on a system slower than Gold Card and only turn it on when you really need it!

Load _bas file

Move the cursor over the _bas file and press Enter. If no BASIC program is currently running then the file will be loaded in ED editor

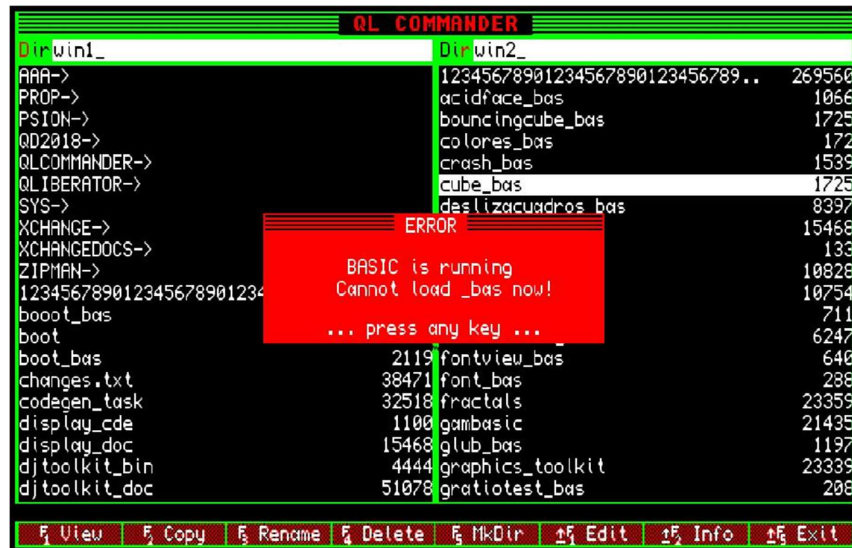
See Load and Run a _bas file for more info

Load and Run _bas file

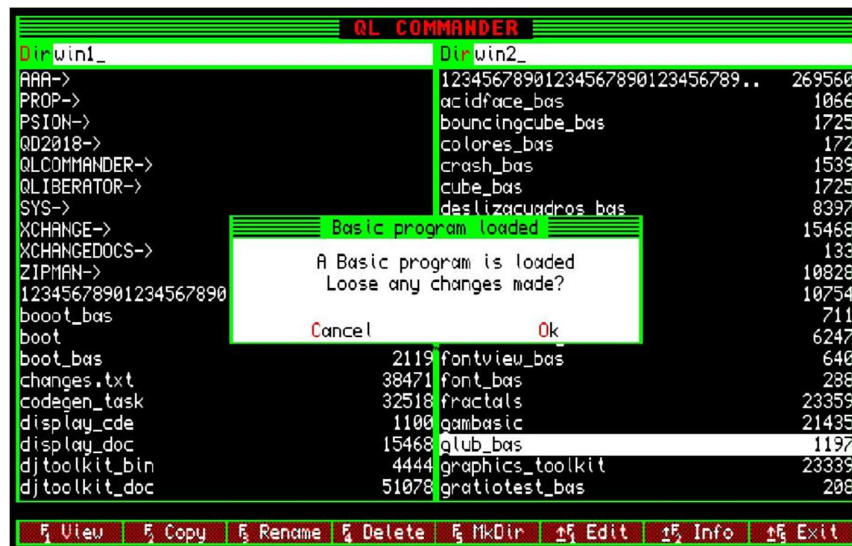
Move the cursor over the _bas file and press Shift-Enter.

QLCommander will first test if a basic file is already running in the interpreter.

If a Basic program is already running then the following message will be shown:



If no BASIC program is running QLCommander will test if a basic file is already loaded and not saved, and if it is will show the following message:



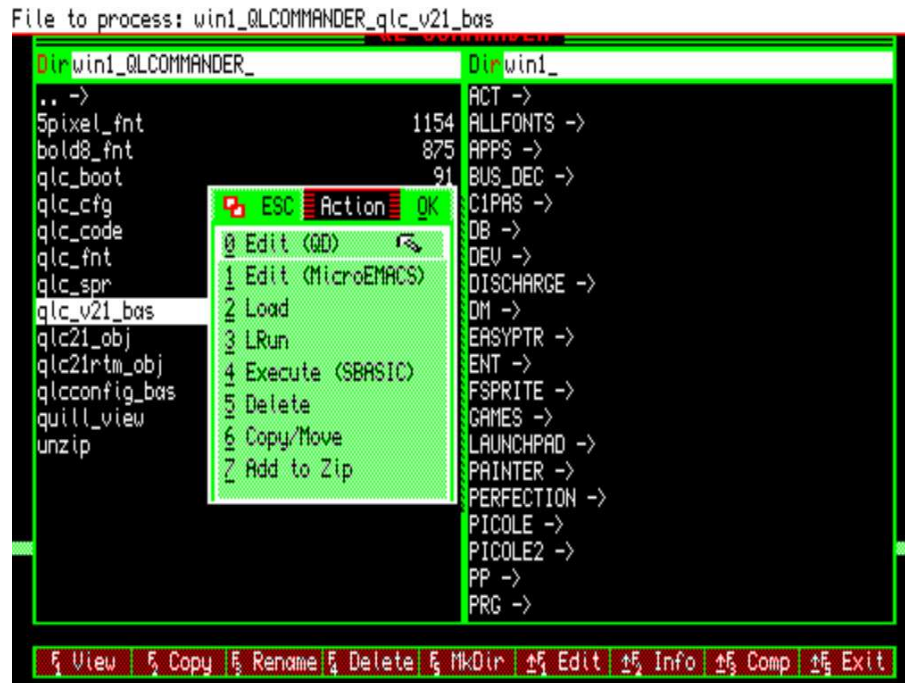
Pressing c or C cancels the loading of the program

Press o or O or Enter to load the program

Using with FileInfo2

If you have FileInfo2 installed and configured on your system then QL Commander can be configured to use it. User can set the desired key combination to invoke FileInfo2 in QLConfig program.

Attention: If you use FileInfo2 to delete, rename, move or compress a file, then you have to reload the directory in QLCommander, to update the changes



Show Help

Press Ctrl-h

Or

Press Shift-F5. The Other commands menu will be displayed. Select 7. Help

The Help window will be displayed

Show About Box

Press Ctrl-a

Or

Press Shift-F5. The Other commands menu will be displayed. Select 6. About

The About box be displayed

Redraw Screen

In rare occasions it might become necessary to redraw the QLCommander screen because other applications or errors were displayed on it, or simply because it was not rendered fully (this can happen in emulators running Minerva + PE, only at speeds higher than Super Gold Card)

Press Shift-F5. The Other commands menu will be displayed. Select 8. Redraw Screen

End Program

Press Shift-F5. The Other commands menu will be displayed. Select 9. End Program

What's New

What's New in version 2.2.7 – March 21st, 2025

- can work with network drives
- SMSQ/E compliant - now you can move the window on the desktop
- Almost twice faster, compiled with Turbo
- better error trapping
- rename directories (including all subdirectories)
- move files/ directories/ selected files and directories
- drive info (drive label, total size, free space, block size, sectors/block)
- Net id
- shows total number of files/directories on a drive/directory
- shows number of selected files/directories
- autocalculate the total size of selected files/directories (user can turn off this feature on slow QLs)
- calculate directory size
- calculate selected files/directories size
- less user input needed when copy/delete/move/overwrite - a single ALL or QUIT for the whole process
- updated unzip to newer version
- can zip full directory
- can zip selected list of files and directories

What's New in version 2.1

- QLCommander can use FileInfo2
- Added Help file
- Updated QLConfig_bas, 5pixel_fnt and qlc_cfg files
- On QPC _scr files can be viewed also when QPC is set in high colour mode and high resolution
- Bug fix: Now QLCommander correctly reads the path sent as command line parameter
- Bug fix: When panel was changed using TAB, and there were a large number of selected files and directories, the colour of the currently selective file/directory under the cursor was not reflecting its correct state (selected or unselected)
- Bug Fix: File size for very large files was shown as 1. Now the file size is correctly shown, if there is enough space to fit the full value. If there is not enough space then the file size is shown as ***** and the correct file size can be viewed using the Info command
- Bug Fix: Command line was not rendered correctly when the narrow font 5pixel_fnt was used and the panel width was smaller than 46 characters